

Transverse Cervicothoracic Stabbing: Multidisciplinary Management of a Surgical Emergency

Delici-kesici Aletle Transvers Servikotorasik Yaralanma: Acil Bir Cerrahi Durumun Multidisipliner Tedavisi

Elena Molina Fernández¹, Ramón Moreno-Luna¹, Francisco López Navas¹, Marta López Porras², C Giménez Jr², Serafin Sánchez Gómez¹

¹Department of Otorhinolaryngology, University Hospital Virgen Macarena, Seville, Spain

²Department of Anesthesiology, University Hospital Virgen Macarena, Seville, Spain

Case Report
Olgu Sunumu

Abstract

Tracheobronchial injuries are closely related to orotracheal intubations and chest traumas. Stabbing injuries are very rare and often life threatening because of the damage to vital structures such as the respiratory tract and large arterial or venous vessels. Early diagnosis and treatment of penetrating neck injuries increase survival rates. We report a case of the tracheobronchial section with a penetrating stabbing wound on the

left laterocervical area associated with contralateral pneumothorax, requiring urgent surgical pulmonary repair, tracheal suture, and tracheotomy. Prompt action with a multidisciplinary approach resulted in a favorable outcome.

Keywords: Tracheal disease, penetrating wounds, airway management, stab wounds

Öz

Trakeobronşiyal yaralanmalar orotrakeal entübasyonlar ve göğüs travmaları ile yakından ilişkilidir. Kesici-delici alet yaralanmaları çok nadirdir ve sıklıkla solunum yolu ve büyük arter ya da venöz damarlar gibi hayati yapılara zarar verdiğinden hayati tehlike oluşturur. Delici boyun yaralanmalarının erken tanısı ve tedavisi hayatta kalım oranlarını artırır. Bu çalışmada, kontralateral pnömotoraks ile ilişkili sol lateroservikal

bölgede delici bir yaradan dolayı, acil cerrahi pulmoner onarım, trakeal sütür ve trakeotomi gerektiren bir trakeobronşiyal yaralanma olgusu sunulmaktadır. Hızlı bir multidisipliner yaklaşım ile olumlu sonuçlar alınmıştır.

Anahtar Kelimeler: Trakeal hastalık, kesici-delici alet yaralanmaları, havayolu yönetimi, bıçak yarası

Introduction

In penetrating neck injuries, the platysma muscle is dissected. The occurrence of tracheobronchial lesions is increasing owing to the increased incidences of complicated orotracheal intubations, other than thoracic blunt traumas. Neck injury as a result of a penetrating trauma represents a small percentage of these patients (1).

According to their location, neck wounds are classified into three areas: Area I, from clavicles to the lower edge of the cricoid cartilage; Area II (most commonly affected by penetrating injuries), from the lower edge of the cricoid cartilage to the angle of the jaw; and Area III, from the angle of the jaw to the skull base (2). Lesions

in neck area can include vascular, aerodigestive tract, salivary gland, neurological tissue or structures, and bone.

Life-threatening structures that may be affected include the pharynx; esophagus; trachea; thyroid gland; innominate artery; brachiocephalic vein; subclavian artery and vein; common, internal, and external carotid arteries; jugular vein; and vertebral artery (3).

There are a few extremely rare cases in which several structures are simultaneously damaged, such as the trachea, azygos lobes, lateral jugular veins, and/or carotid artery, but such damage does not necessarily lead to immediate death (4).



Cite this article as: Molina Fernández E, Moreno-Luna R, López Navas F, López Porras M, Giménez Jr C, Sánchez Gómez S. Transverse Cervicothoracic Stabbing: Multidisciplinary Management of a Surgical Emergency. Turk Arch Otorhinolaryngol 2017; 55: 144-7.

This study was presented at the 67th National Congress SEORL CCC, 22 October 2016, Seville, Spain.

Bu çalışma, 67. SEORL CCC Ulusal Kongresi'nde sunulmuştur, 22 Ekim 2016 Sevilla, İspanya.

Address for Correspondence/Yazışma Adresi: Moreno Luna Ramon
E-mail: ramoluor@gmail.com

Received Date/Geliş Tarihi: 03.01.2017

Accepted Date/Kabul Tarihi: 06.02.2017

Available Online Date/Çevrimiçi Yayın Tarihi: 08.06.2017

© Copyright 2017 by Official Journal of the Turkish Society of Otorhinolaryngology and Head and Neck Surgery Available online at www.turkarchotorhinolaryngol.org

© Telif Hakkı 2017 Türk Kulak Burun Boğaz ve Baş Boyun Cerrahisi Derneği Makale metnine www.turkarchotorhinolaryngol.org web sayfasından ulaşılabilir.

DOI: 10.5152/tao.2017.2273

The main determinant of survival, regardless of the injury mechanism or anatomical location, is the time lag prior to diagnosis and treatment. Early diagnosis and primary repair lead to a reduction in complications and better results in the short, medium, and long term. Unfortunately, most patients die before receiving appropriate care (4).

The analysis of specific cases of stab wounds in extreme situations could make us redefine the protocols

Case Presentation

We report the case of a 49-year-old male using nasal drugs admitted to the emergency department of our hospital with a left laterocervical stabbing wound after a street brawl.

Upon examination, the patient was conscious and showed tachycardia, tachypnea, and hypoxemia with an oxygen saturation of

85%, tensions maintained in the normal range. On auscultation, bilateral hypoventilation was appreciated, more pronounced in the right hemithorax. Initial physical examination revealed a 2-cm penetrating wound in the III left cervical area associated with the air leak and progressive subcutaneous emphysema. Given the unfavorable evolution and increasing breathlessness, endotracheal intubation was performed. Subsequently, additional tests were conducted.

Anteroposterior radiograph showed right extensive pneumothorax with complete atelectasis (Figure 1). Neck–chest computed tomography (CT) angiography: Extensive anterior subcutaneous emphysema extending caudally, and mediastinal plane dissection. Large right pneumothorax with complete atelectasis. Right posterolateral tracheal injury about 3 cm above the carina (Figure 2a-c). Given these findings, the ear nose throat and thoracic surgeons decided to perform an urgent intervention.

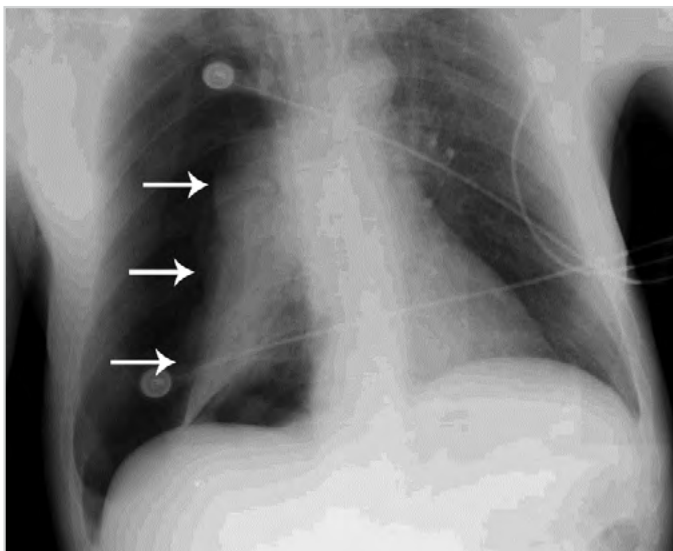


Figure 1. Anteroposterior radiograph showing right extensive pneumothorax with complete atelectasis

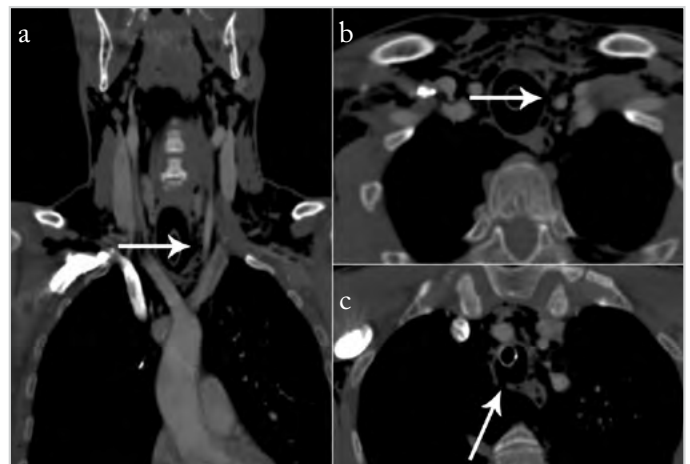


Figure 2. a-c. (a) Neck–chest computed tomography angiography. Left tracheal wall injury (Arrow) with penetration through the subcutaneous tissue and muscular plane. (b) Neck–chest CT angiography showing tracheal perforation (arrow). (c) Right posterior tracheal wall lesion corresponding to the stab output path (arrow)

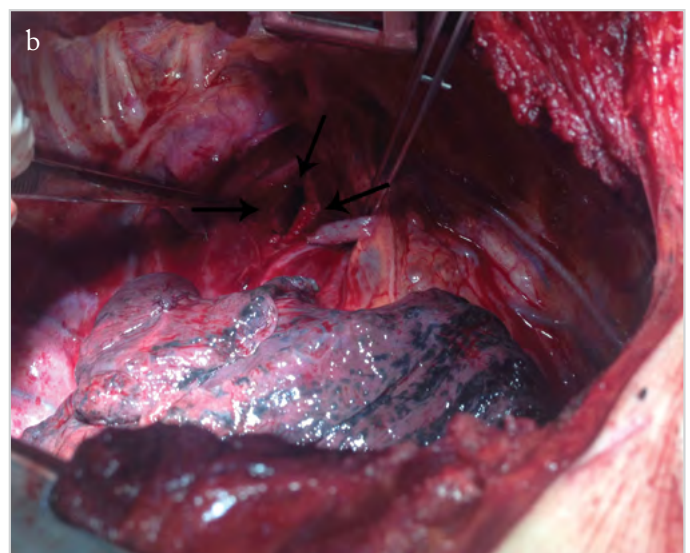
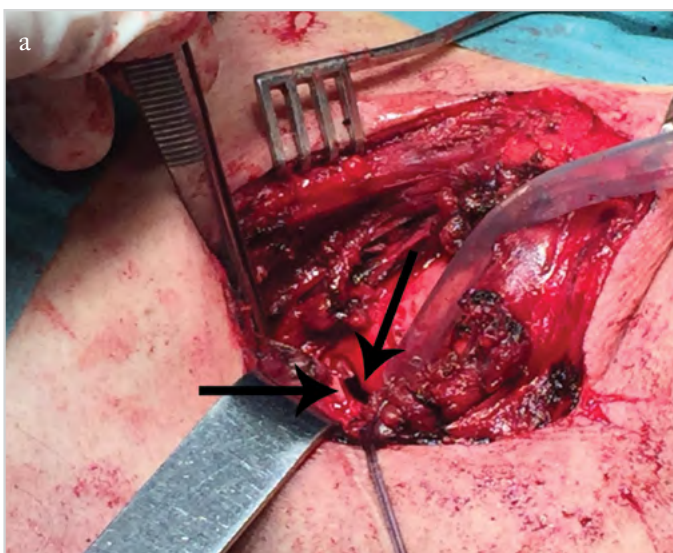


Figure 3. a, b. (a) Anterior cervical approach. Tracheal injury corresponding to the input path of the lesion in left cervical region. (b) Right posterolateral thoracotomy. Tracheal lesion in the right thoracic region with exit path (area pointed by the clamp)

An anterior cervical approach was used (5). The pre-laryngeal muscles and the thyroid isthmus were sectioned to provide a thorough exploration from the cricoid cartilage to the 7th tracheal ring. An "L"-shaped laceration was located in left tracheal portion between the 6th and 7th tracheal rings close to the esophagus (Figure 3a). Esophagus did not appear to be damaged. A 3/0 absorbable monofilament direct suture was used for the tracheal injury. After this, a tracheotomy was performed in the third tracheal ring for selective left lung endotracheal intubation.

The wound had an oblique path from left to right, with an exit orifice in the lower right tracheal region. A right posterolateral thoracotomy (at the 5th level of the intercostal space) was performed, showing a torn azygos lobe and tracheal laceration (Figure 3b). Azygos vein stapling was performed using 45-mm vascular Endo Gia. After this, a direct suture of the tracheal laceration was performed, which was reinforced with a mediastinal pleuraplasty.

The patient's stay in the intensive unit care was uneventful, after which he was transferred to a normal ward and then discharged after a week of hospitalization. The specialized management of tracheotomy performed in subsequent patient and visits by specialized professionals allowed early decannulation and prevented additional surgical interventions.

Discussion

Early diagnosis and treatment of penetrating neck injuries translates into a significant increase in life expectancy. Therefore, optimization of available resources is necessary to achieve the best results in such critical situations.

It is transcendental to preserve the airway by endotracheal intubation in patients with respiratory distress. Urgent intubation is necessary even in cases wherein a fiber-optic-guided intubation (which provides greater security) is not possible because a delay could be life threatening (6). It has been shown that a fiber-optic-guided intubation decreases the probabilities of creating a false route in a fractured tracheobronchial tree but should only be performed when there is no breathing difficulty.

The development of imaging techniques has shown a remarkable improvement over surgical explorations in hemodynamically stable patients, providing further planning optimization. However, surgical exploration remains of choice in patients with hemodynamic instability. Thorax CT continues to be an essential test in the diagnosis of penetrating injuries of the tracheobronchial tree. Although a normal result does not rule out airway involvement, it is a helpful tool in situations that may cause acute asphyxia, including mediastinal emphysema, tension pneumothorax or hemothorax, as well as other injuries such as rib fractures and subcutaneous emphysema (7).

More specific tests, such as CT angiography, provide superior accuracy in vascular, aerodigestive, bone, and glandular lesions, facilitating decision-making pertaining to surgeries (7).

The use of suture material stimulates the healing process and also facilitates a decrease in the probability of complications in the postoperative period (8).

In the reported case, the patient was hemodynamically stable but presented respiratory distress; thus, an endotracheal intubation not guided by fiber-optic bronchoscopy was performed as a first step to preserve the airway. Subsequently, complementary imaging studies were conducted to assess the location and nature of lesions for undertaking an urgent open surgery. The wound had an oblique path from left to right, with an exit orifice in the lower right tracheal region; thus, it was very difficult to provide a selective intubation of the left main bronchus. Therefore, it was decided to make a selective left lung intubation through a tracheotomy before the 4th intercostal space using the right posterolateral approach.

Damage to vital structures after a thoracic penetrating trauma often causes the patient's death before receiving health assistance; thus, it is uncommon to treat such cases in hospitals. A multidisciplinary approach and flexible adaptation to respiratory and bleeding problems are the landmarks in these cases. In this case, early and confident teamwork decisions were made, enabling patient survival after a complex handling.

Conclusion

Lesions of the tracheobronchial tree need an urgent and decisive decision because a delay in action may reduce the possibilities of survival. Therefore, it is essential to develop a multidisciplinary collaboration to handle these cases as quickly, flexibly, and effectively as possible.

Informed Consent: Written informed consent was obtained from the patient who participated in this study.

Peer-review: Externally peer-reviewed.

Author Contributions: Concept - M.F.E., M.L.R., L.N.F., S.G.S.; Design - M.F.E., M.L.R., S.G.S.; Supervision - M.F.E., S.G.S., L.N.F.; Resource - M.F.E., M.L.R., L.N.F., S.G.S.; Materials - M.L.P., C.G.J.R., S.G.S.; Data Collection and/or Processing - M.F.E., M.L.R., M.L.P., C.G.J.R., S.G.S.; Analysis and/or Interpretation - M.F.E., M.L.R.; Literature Search - M.F.E., M.L.R., L.N.F., M.L.P., C.G.J.R.; Writing - M.F.E., M.L.R., S.G.S.; Critical Reviews - M.F.E., M.L.R., L.N.F., M.L.P., C.G.J.R., S.G.S.

Acknowledgments: The authors are grateful to all the staff who voluntarily participated in the management of the patient. We also thank to the Anesthesiology Department of the University Hospital of Virgen Macarena, for their excellent technical assistance.

Conflict of Interest: No conflict of interest was declared by the authors.

Financial Disclosure: The authors declared that this study has received no financial support.

Hasta Onamı: Yazılı hasta onamı bu çalışmaya katılan hastadan alınmıştır.

Hakem Değerlendirmesi: Dış bağımsız.

Yazar Katkıları: Fikir - M.F.E., M.L.R., L.N.F., S.G.S.; Tasarım - M.F.E., M.L.R., S.G.S.; Denetleme - M.F.E., S.G.S., L.N.F.; Kaynaklar - M.F.E., M.L.R., L.N.F., S.G.S.; Gereçler - M.L.P., C.G.J.R., S.G.S.; Veri Toplanması ve/veya İşlemesi - M.F.E., M.L.R., M.L.P., C.G.J.R., S.G.S.; Analiz ve/veya Yorum - M.F.E., M.L.R.; Literatür Taraması - M.F.E., M.L.R., L.N.F., M.L.P., C.G.J.R.; Yazıyı Yazan - M.F.E., M.L.R., S.G.S.; Eleştirel İnceleme - M.F.E., M.L.R., L.N.F., M.L.P., C.G.J.R., S.G.S.

Teşekkür: Yazarlar hastanın tedavisine gönüllü olarak katılan tüm ekibe ve mükemmel teknik yardımları için Virgen Macarena Hastanesi Anesteziyoloji Bölümü'ne teşekkür ederler.

Çıkar Çatışması: Yazarlar çıkar çatışması bildirmemişlerdir.

Finansal Destek: Yazarlar bu çalışma için finansal destek almadıklarını beyan etmişlerdir.

References

1. Tcherveniakov A, Tchalakov P, Tcherveniakov P. Traumatic and iatrogenic lesions of the trachea and bronchi. *Eur J Cardiothorac Surg* 2001; 19: 19-24. [\[CrossRef\]](#)
2. Saito N, Hito R, Burke PA, Sakai O. Imaging of penetrating injuries of the head and neck: current practice at a level I trauma center in the United States. *Keio J Med* 2014; 63: 23-33. [\[CrossRef\]](#)
3. Gabor S, Renner H, Pinter H, Sankin O, Maier A, Tomaselli F, et al. Indications for surgery in tracheobronchial ruptures. *Eur J Cardiothorac Surg* 2001; 20: 399-404. [\[CrossRef\]](#)
4. Cassada DC, Munyikwa MP, Moniz MP, Dieter RA Jr, Schuchmann GF, Enderson BL. Acute injuries of the trachea and major bronchi: importance of early diagnosis. *Ann Thorac Surg* 2000; 69: 1563-7. [\[CrossRef\]](#)
5. Rossbach MM, Johnson SB, Gomez MA, Sako EY, Miller OL, Calhoon JH. Management of major tracheobronchial injuries: a 28-year experience. *Ann Thorac Surg* 1998; 65: 182-6. [\[CrossRef\]](#)
6. Baumgartner FJ, Ayres B, Theuer C. Danger of false intubation after traumatic tracheal transection. *Ann Thorac Surg* 1997; 63: 227-8. [\[CrossRef\]](#)
7. Farzanegan R, Alijanipour P, Akbarshahi H, Abbasidezfouli A, Pejhan S, Daneshvar A, et al. Major airways trauma, management and long term results. *Ann Thorac Cardiovasc Surg* 2011; 17: 544-51. [\[CrossRef\]](#)
8. Sönmez K, Bahar B, Karabulut R, Gülbahar O, Poyraz A, Türkyilmaz Z, et al. Effects of different suture materials on wound healing and infection in subcutaneous closure techniques. *B-ENT* 2009; 5: 149-52.